



*CONSTANT PRESSURE.
PLAIN AND SIMPLE.*

AquaBoost™ Packaged Systems

BUILT WITH THE QUALITY YOU'VE COME TO EXPECT FROM GOULDS WATER TECHNOLOGY

BRAQBST

 **GOULDS**
WATER TECHNOLOGY
a xylem brand

AQUABOOST

PUMP STATIONS

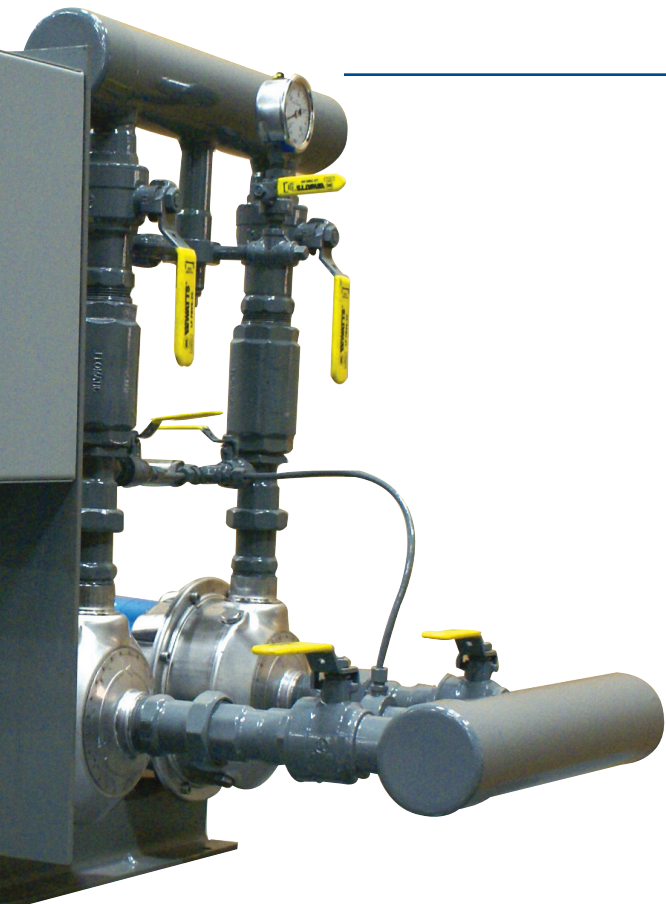
AquaBoost Pump Stations are designed to be simple from beginning to end. They are simple to specify, simple to install, simple to set up. Best of all, with Goulds Water Technology's single-source responsibility and technical expertise, it's simple to work with us. The AquaBoost VS (Variable Speed) and AquaBoost CS (Constant Speed) pump stations are a pre-engineered, factory assembled line of packaged booster systems that provide hydraulic capabilities from 20 GPM to 220 GPM and boosts up to 55 PSI. AquaBoost Pump Stations give you an intelligent pump system that provides maximum value, proven reliability, superior energy efficiency and better system protection. In addition, the AquaBoost Pump Station provides consistent performance even with your changing system demands. The AquaBoost Pump Station provides pressure boosting for a variety of applications including irrigation buildings, commercial plants, municipal and rural water districts.



- ANSI / NSF 61 / NSF 61 Annex G certified
- Easy installation and start-up
- Goulds Water Technology stainless steel pumps

GENERAL INFORMATION

For complete system capabilities and detailed specifications go to www.xyleminc.com/brands/gouldswatertechnology



FEATURES AND SPECIFICATIONS

- All systems are UL listed as packaged pumping systems
- Compact Footprint - Ideal for retrofit installations and new construction.
- 115V, 208V, 230V, 380V, 460V, 575V models available.
- Simplex and Duplex
- Each system is fabricated with Goulds Water Technology 316L stainless steel centrifugal pumps
- Standard TEFC motors
- System protection from overvoltage, undervoltage, blocked suction, cavitation, NPSHa, phase loss, short circuit (protection capabilities vary for AquaBoost VS and AquaBoost CS), transducer failure and motor current overload.
- Liquid temperatures up to 105° F
- Ambient temperatures up to 104° F
- Flow up to 220 GPM. Maximum boost of 55 PSI.
- Pump run-out protection
- Dry running protection
- Programmable lead/lag alternation (duplex)
- Programmable system pressure starting (VS)
- Fault detection and alarm notification
- Motor Run Relay (CPC)
- Isolation valves (duplex systems)

All AquaBoost Packaged Systems are certified ANSI/NSF-61/ NSF-61 Annex G

What does the NSF-61 certification mean?

NSF/ANSI Standard 61 - *Drinking Water System Components* was published in 1988 to establish minimum requirements for the control of potential adverse human health effects from products that contact drinking water.

NSF/ANSI Standard 61 includes criteria for testing and evaluating products to ensure they do not leach contaminants, such as lead, into the water that would be a health concern. These contaminants include those regulated by the United States Environmental Protection Agency (USEPA) and Health Canada, as well as any other non-regulated compounds that may be of concern.

What does this mean for you?

Across the country, states, cities and municipalities are making ANSI/NSF-61/NSF-61 Annex G a requirement for potable water applications. As more products are rolled into federal standards for safe drinking water, Goulds Water Technology makes it easy to get the job done with our fully-certified UL-Listed packaged systems.

QUALIFICATIONS

AquaBoost CS

Constant Speed Simplex



Specifically designed as a compact, easy to install and maintain package for applications where sufficient main pressure is not available or elevation is a problem. Typical installations include residences, apartment buildings, condominiums and light commercial applications. The AquaBoost CS is available in both one and two pump packages. Simplex capacities range from 20 to 110 GPM at a boost of up to 55 psig. Duplex capacities are up to 220 GPM.

Constant Speed Duplex



AquaBoost CS Systems

Pumps are close coupled with stainless steel casing and internals. All piping on the package is non-ferrous for use with potable water.

Pump motors are TEFC from 1 HP through 5 HP. The AquaBoost CS is factory assembled, wired and tested. Electrical panel is UL listed, NEMA 1 enclosure with voltages ranging from 115/1/60, 230/1/60, 208/3/60, 230/3/60, 380/3/50, 460/3/60 and 575/3/60. The panel includes a control power transformer, Hand-Off-Auto switch(es), pilot light(s), and minimum run timer to prevent short cycling. The pump(s) will stop during periods of low demand and restart upon a drop in system pressure.

Duplex models provide automatic alternation to permit even pump usage, and units can be sized to act as 100% stand by or stage pumps based on demand. Lag pump will start automatically upon failure of lead pump and pump failure is indicated at the panel.

Options:

- Pressure control valves*
- PRV*
- Storage Tank*
- Low Suction Pressure Cutout

Common configurations stocked at the factory.

*Shipped separately

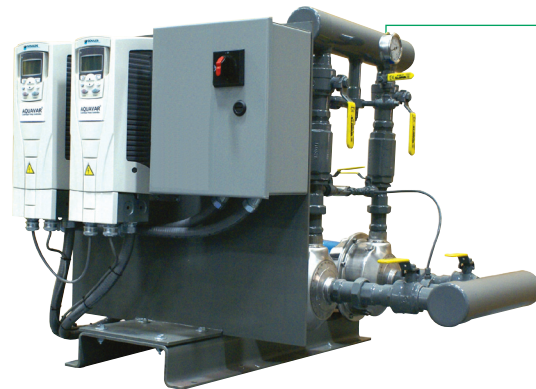
AquaBoost VS

Variable Speed Simplex



Specifically designed as a compact, easy to install and maintain package for applications where sufficient main pressure is not available or elevation is a problem. Typical installations include residences, apartment buildings, condominiums and light commercial applications. The AquaBoost VS is available in both one and two pump packages. Simplex capacities range from 20 to 110 GPM at a boost of up to 55 psig. Duplex capacities are up to 220 GPM.

Variable Speed Duplex



As opposed to a constant-speed control panel, a variable-speed drive controls the speed of the pump to precisely match system demand. The AquaBoost VS drastically reduces tank size and can significantly improve energy usage.

- Variable-Speed Package Performance
- Minimized Project Expenses

AquaBoost VS Systems

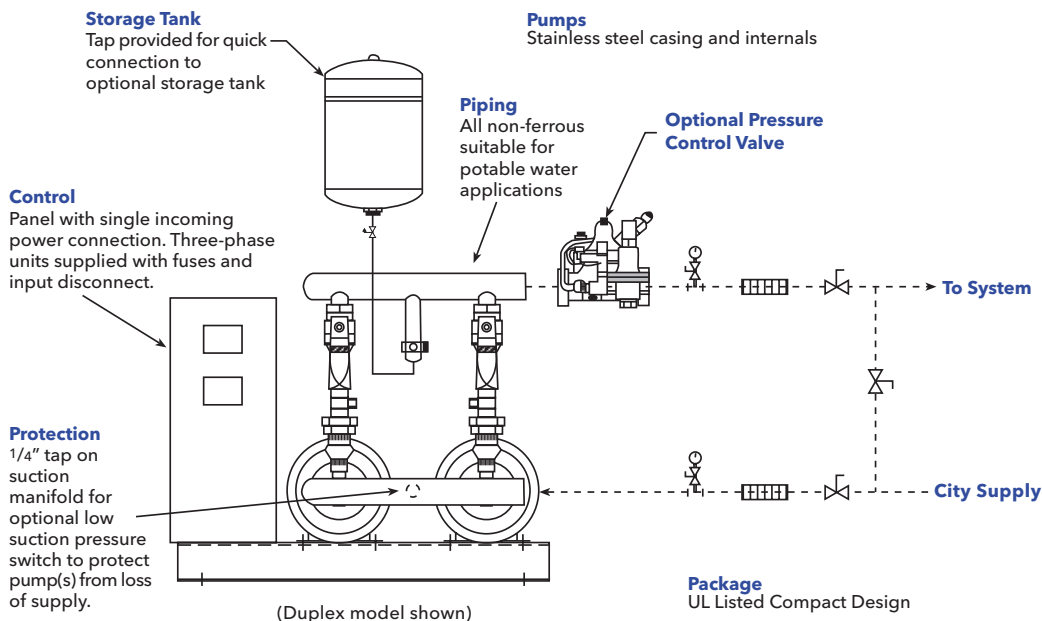
Pumps are close coupled with stainless steel casing and internals. All piping on the package is non-ferrous for use with potable water.

Pump motors are TEFC from 1 HP through 5 HP. The AquaBoost VS is factory assembled, wired and tested. Electrical panel is UL listed, NEMA 1 enclosure with voltages ranging from 115/1/60, 208/1/60, 230/1/60, 208/3/60, 230/3/60, 380/3/50 and 575/3/60. The pump(s) will stop during periods of low demand and restart upon a drop in system pressure.

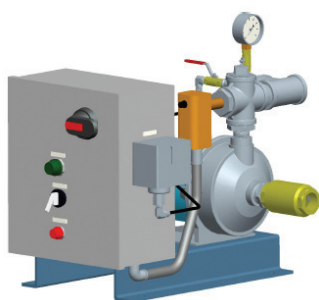
Duplex models provide automatic alternation to permit even pump usage, and units can be sized to act as 100% stand by or stage pumps based on demand. Lag pump will start automatically upon failure of lead pump and pump failure is indicated at the panel.

AquaBoost Packaged Systems

Typical Field Piping, Constant-Speed shown



Sizing Guide



Simplex AquaBoost Selection Chart

PSI	20 GPM	30 GPM	40 GPM	50 GPM	60 GPM	70 GPM	80 GPM	90 GPM	100 GPM	110 GPM
20					1B20	1B20	1B30	1B30	1B30	
25			1A15	1B20	1B20	1B30	1B30	1B30	1B30	1B50
30	1A15	1A15	1A20	1B20	1B30	1B30	1B50	1B50	1B50	1B50
35	1A15	1A15	1A20	1B30	1B30	1B50	1B50	1B50	1B50	
40	1A15	1A20	1A30	1B50	1B30	1B50	1B50	1B50		
45	1A20	1A20	1A30	1B50	1B50	1B50				
50	1A20	1A30	1B50	1B50						
55	1A20	1A30								

CONSULT FACTORY

*Above selections provide non-overloading motors across entire pump curve.

Duplex AquaBoost Selection Chart

PSI	40 GPM	60 GPM	80 GPM	100 GPM	120 GPM	140 GPM	160 GPM	180 GPM	200 GPM	220 GPM
20					2B20	2B20	2B30	2B30	2B30	
25			2A15	2B20	2B20	2B30	2B30	2B30	2B30	2B50
30	2A15	2A15	2A20	2B20	2B30	2B30	2B50	2B50	2B50	2B50
35	2A15	2A20	2A30	2B30	2B30	2B50	2B50	2B50	2B50	
40	2A20	2A20	2A30	2B50	2B30	2B50	2B50	2B50		
45	2A20	2A20	2B50	2B50	2B50	2B50				
50	2A20	2A30	2B50	2B50						
55	2A20	2A30								

CONSULT FACTORY

*Above selections provide non-overloading motors across entire pump curve.

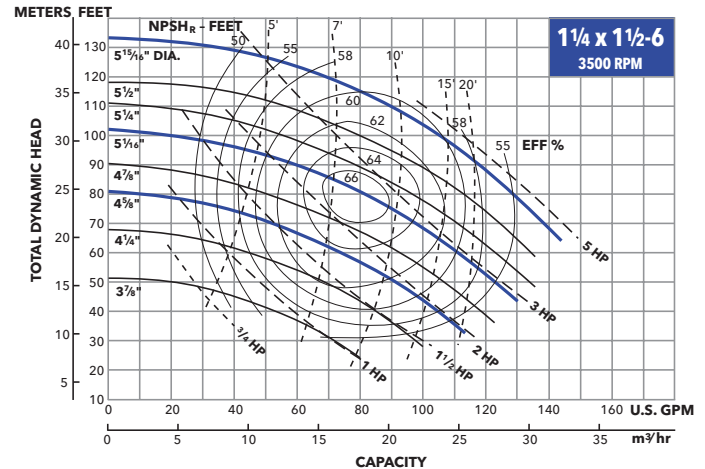
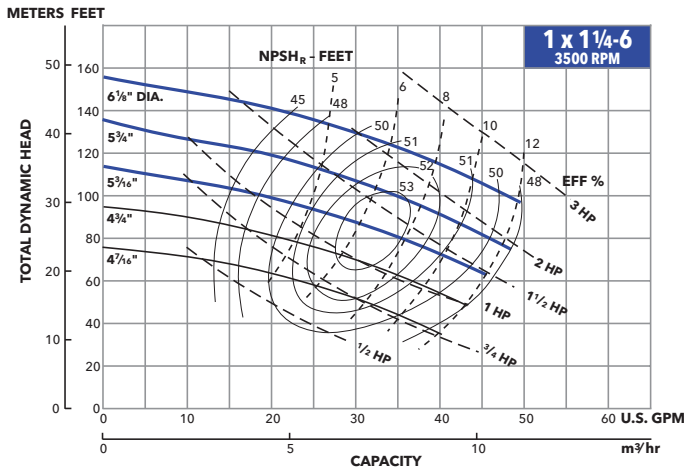
Selections are based on two pumps in parallel. Refer to NPE pump curves or consult factory for duty/standby operation.

AquaBoost Packaged Systems

Dimensions and Weights

Model	HP	Overall Dimensions and Weights		System Connections	
		Simplex	Duplex	Simplex	Duplex
1A15 or 2A15	1.5	24 ⁵ / ₈ " L x	29 ¹ / ₄ " L x	1 ¹ / ₂ "	2"
1A20 or 2A20	2	19 ³ / ₄ " W x 17 ³ / ₈ " H	30 ³ / ₄ " W x 24 ⁷ / ₈ " H		
1A30 or 2A30	3	206 LBS	410 LBS		
1B20 or 2B20	2	24" L x	30 ³ / ₄ " L x	3"	
1B30 or 2B30	3	19 ³ / ₄ " W x 17 ³ / ₈ " H	32 ⁵ / ₈ " W x 29" H		
1B50 or 2B50	5	206 LBS	410 LBS		

AquaBoost Packaged Systems Pump Curves



Model Number

AQUABOOST NAMING SYSTEM					
# of pumps	Pump Model/RPM	HP	Voltage/Phase	Impeller Diameter	Control
1	A (1 x 1 ¹ / ₄ , 3600)	05 = 1/2	1 = 115/1/60	A = 4 ⁵ / ₈ "	CS = Constant Speed
2	B (1 ¹ / ₄ x 1 ¹ / ₂ , 3600)	07 = 3/4	2 = 208/3/60	B = 5 ¹ / ₁₆ "	VS = Variable Speed
		10 = 1	3 = 380/3/50	C = 5 ³ / ₁₆ "	
		15 = 1 1/2	4 = 460/3/60	D = 5 ³ / ₄ "	
		20 = 2	5 = 575/3/60	E = 5 ¹⁵ / ₁₆ "	
		30 = 3	6 = 230/1/60	F = 6 ¹ / ₈ "	
		50 = 5	7 = Other	Z = other	
			8 = 230/3/60		
			A = 208-230/3/60		
			B = 208-230/1/60		



Xylem |'zīləm|

- 1) The tissue in plants that brings water upward from the roots;
- 2) a leading global water technology company.

We're 12,500 people unified in a common purpose: creating innovative solutions to meet our world's water needs. Developing new technologies that will improve the way water is used, conserved, and re-used in the future is central to our work. We move, treat, analyze, and return water to the environment, and we help people use water efficiently, in their homes, buildings, factories and farms. In more than 150 countries, we have strong, long-standing relationships with customers who know us for our powerful combination of leading product brands and applications expertise, backed by a legacy of innovation.

For more information on how Xylem can help you, go to www.xylem.com



Xylem Inc.
10661 Newkirk Street
Dallas, Texas 75220
Phone: 800-786-7480
Fax: 214-357-5861
www.xylem.com/brands/gouldswatertechnology

Goulds is a registered trademark of Goulds Pumps, Inc. and is used under license.
© 2012 Xylem Inc. BRAQBST November 2012