

APPLICATIONS

- Secondary sump pump
- Flood protection
- Emergency dewatering



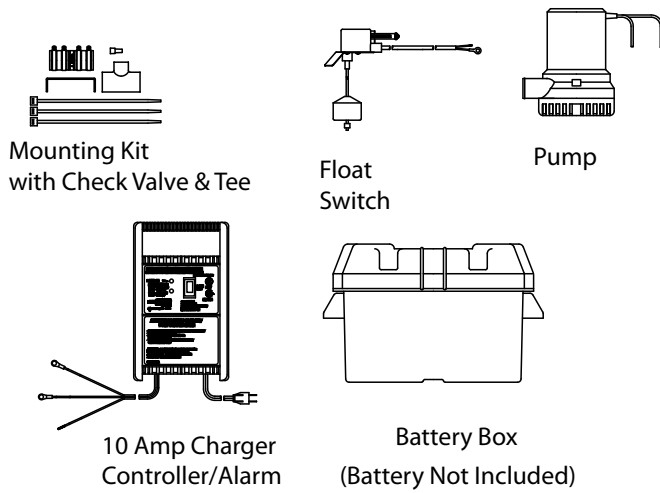
FEATURES

- 12 Volt DC pump
- The back-up system is powered by a 12 Volt DC battery (not included). The battery used should be a deep cycle marine battery rated from 105 to 140 amp-hours. A 140 amp-hour battery can provide in excess of nine (9) hours of continuous operation.
- Controller/Charger/Alarm, 10 amp
- A controller/charger monitors the battery condition and charges the battery when required. It also alerts the homeowner when the system has operated or when possible flooding conditions exist.
- Audible alarm:
 - When pump runs (must be reset)
 - When battery is discharged
- Indicator lights (LED) for:
 - Power on
 - Battery charging
 - Battery fully charged
- Float switch
- Check valve for 12 volt pump
- PVC tee for connection to existing 1-1/2 discharge pipe of primary pump
- Battery box (battery not included)
- Pump mounting bracket and clamp

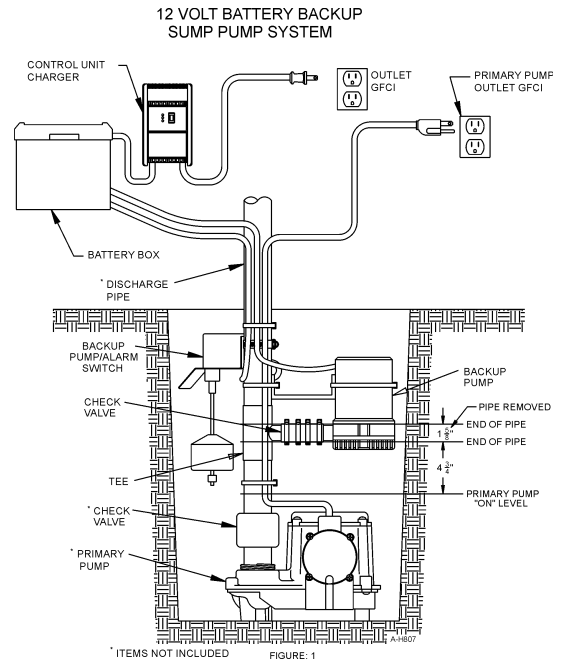
SERIES SPECIFICATIONS

	Item No.	Model	Volts	Hz	Amps		Watts	Performance (GPH @ Head)			Shut-Off		Weight
					FLA	Start		5'	10'	15'	Feet	PSI	
Pump	506400	SPBS-12	12VDC	60	12	36	–	1360	1000	570	21	9.1	17.5 lbs 7.94 kg
Charge Input	–	–	120VAC	60	2	–	230	–	–	–	–	–	–
Charge Output	–	–	12VDC	–	10	–	–	–	–	–	–	–	–

ENGINEERING DATA



Typical Installation



PERFORMANCE DATA

