



| FASCO MODEL | TYPE | DIA. | HP | VOLTS | RPM | SPD. | AMPS | ROT. | BRING. | CROSS REF. | FIG. | NOTES |
|------------------------------|------|------|------|-------|------|------|------|------|--------|---------------------------|------|-------|
| AMERICAN WATER HEATER | | | | | | | | | | | | |
| W1 | SP | 3.3 | 1/25 | 115 | 3210 | 1 | 1.9 | CW | SLV | 7021-10060, 3000288 | A | |
| AO SMITH | | | | | | | | | | | | |
| W2 | SP | 3.3 | 1/14 | 115 | 3275 | 1 | 2.3 | CW | BALL | 7021-10770, 183505-000 | B | |
| W4 | SP | 3.3 | 1/20 | 115 | 3300 | 1 | 1.8 | CCW | SLV | 7021-10910, 183381-000 | C | |
| BRADFORD WHITE | | | | | | | | | | | | |
| W3 | SP | 3.3 | 1/17 | 115 | 3000 | 1 | 1.8 | CCW | SLV | 117524-00, 239-39785-00 | D | |
| W5 | SP | 3.3 | 1/14 | 115 | 3275 | 1 | 2.5 | CW | BALL | 7021-10712, 239-42133-00B | E | |
| W6 | SP | 3.3 | 1/15 | 115 | 3000 | 1 | 2.2 | CCW | SLV | 7021-9764, 239-4061 4-00C | F | |
| GSW | | | | | | | | | | | | |
| W7 | SP | 3.3 | 1/25 | 115 | 3200 | 1 | 1.3 | CW | SLV | 7021-8347, 63217 | G | |
| W8 | SP | 3.3 | 1/25 | 115 | 3200 | 1 | 1.3 | CW | SLV | 7021-9756, 63172 | H | |
| STATE IND. | | | | | | | | | | | | |
| W9 | SP | 3.3 | 1/60 | 115 | 3000 | 1 | 0.95 | CW | SLV | 7021-10548, 0012400500 | I | |
| W10 | SP | 3.3 | 1/20 | 115 | 3400 | 1 | 1.8 | CCW | SLV | 7021-11086, 0012400540 | J | |



FIG. A W1



FIG. B W2



FIG. C W4



FIG. D W3



FIG. E W5



FIG. F W6



FIG. G W7



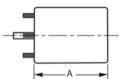
FIG. H W8



FIG. I W9



FIG. J W10



Thermally protected • UL recognized • CSA or ULc certified
NOTE: Rotation is determined by looking at shaft end. Shaft length is measured from motor face.